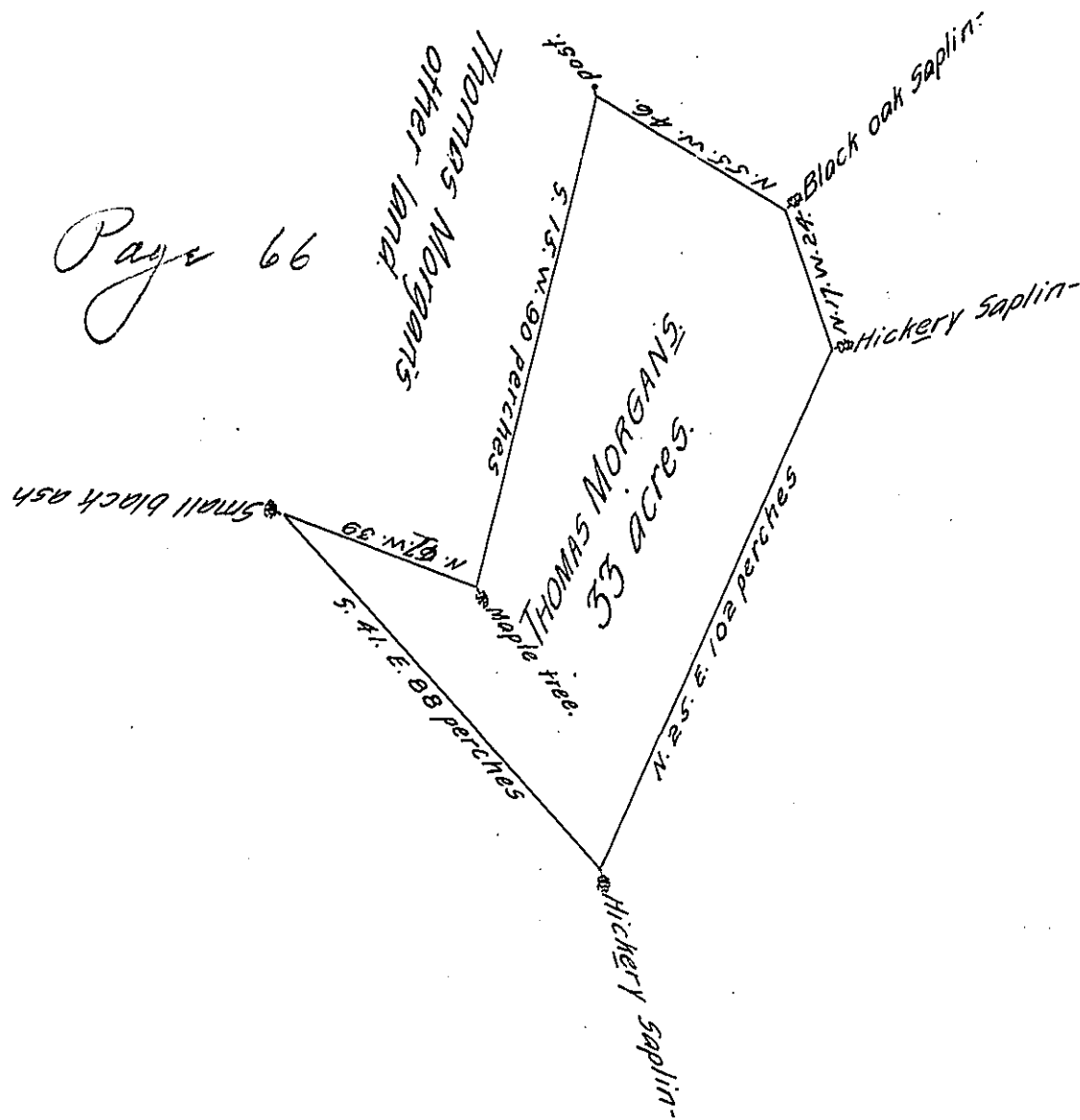


Page 66



By Vertue of a Warr<sup>t</sup> from the prop<sup>s</sup> for 200<sup>a</sup> dated the 23<sup>d</sup> of March 1736. Surv<sup>d</sup> &c in part whereof 154<sup>a</sup> & Allow. was Returned the 6<sup>th</sup> of April 1737. Thomas Morgans Land Situate on A branch of Conestogo Creek in Carnarvan township, in the County of Lancaster, in the province of pensilvania Joyning to his other Land. Begins at a Small Black ash by the said Creek Side, thence South forty one Degrees East by Vacant land Eighty Eight perches to A Hickery Saplin, thence North twenty five Degrees <sup>East</sup> by Vacant Land one hundred and two perches to A hickery Saplin, thence North Seventeen Degrees West by Vacant Land twenty four perches to A black oak Saplin, thence North fifty five Degrees West by Vacant Land forty six perches to A post in the line of Thomas Morgans other Land, thence South fifteen Degrees West by the Same Land Ninty perches to A Maple tree, a corner of Thomas Morgans other Land, thence North sixty seven Degrees West by the Same Land thirty Nine perches to the place of Begining. Contain- ing thirty three acres, that is 31<sup>a</sup> & Allowance &c.

Surrey<sup>d</sup> the 22<sup>d</sup> of July 1737.

J. Francis Wayne. —

IN TESTIMONY that the above is a copy of the original remaining on file in the Department of Internal Affairs of Pennsylvania, made conformably to an Act of Assembly approved the 16th day of February, 1833, I have hereunto set my Hand and caused the Seal of said Department to be affixed at Harrisburg, this twenty-fifth day of September 1905.

*Loac R. Brown*  
Secretary of Internal Affairs.